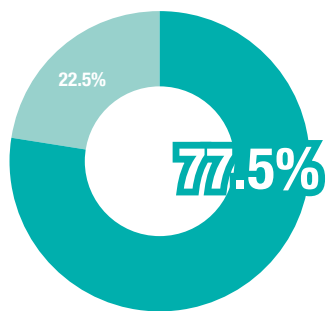


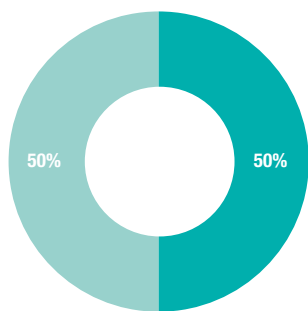
PARTICIPATION - URBAN RESIDENTS

ACTIVE Vs INACTIVE



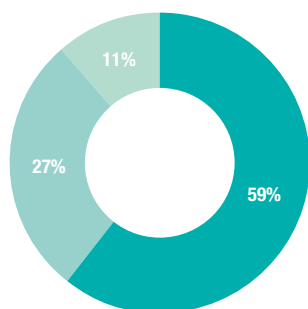
- Active population
- Inactive population

ORGANISED Vs UNORGANISED ACTIVITIES



- Organised
- Unorganised

TYPE OF ORGANISATION

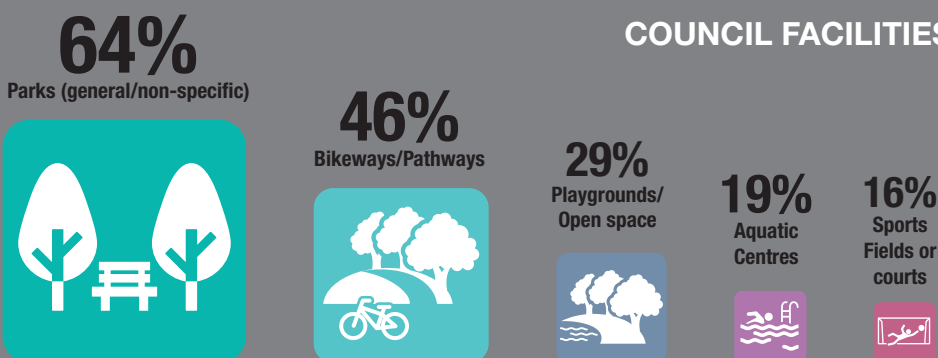


- Sport or recreation club or association that required payment of membership, fees or registration
- Fitness, leisure or indoor sports centre that required payment for participation
- Council Fitness Program (i.e. Live Well Logan Program etc.)

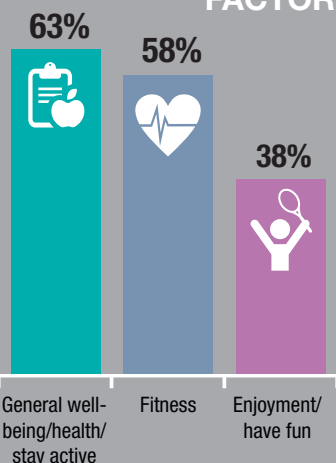
TOP 5 ACTIVITIES AND AVERAGE PARTICIPATION PER WEEK



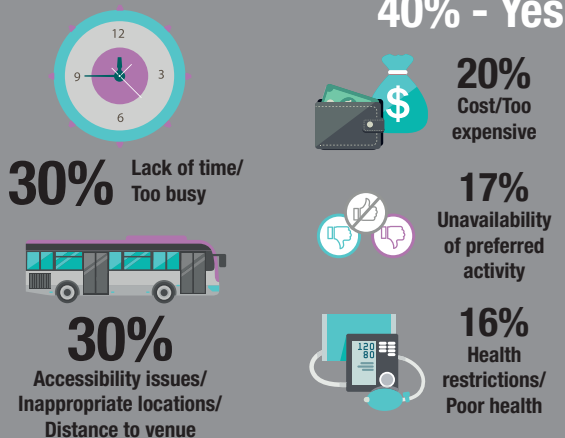
COUNCIL FACILITIES



TOP 3 MOTIVATING FACTORS



BARRIERS TO PARTICIPATION



57% - No
40% - Yes

Note:

To better understand community physical levels, Logan City Council conducted a survey in November and December 2015. Data was gathered on organised and unorganised sport, recreation and physical activity. Results were collated by the AEC Group from responses of 979 Logan residents 15 years old and over. The above information was derived from the responses of 763 Logan residents 15 years old and over, living in an urban suburb. Urban suburbs comprise: Bahrs Scrub, Bannockburn, Beenleigh, Berrinba, Bethania, Boronia Heights, Browns Plains, Chambers Flat, Cornubia, Crestmead, Daisy Hill, Eagleby, Edens Landing, Forestdale, Heritage Park, Hillcrest, Holmview, Kingston, Logan Central, Logan Reserve, Loganholme, Loganlea, Marsden, Meadowbrook, Mount Warren Park, Park Ridge, Regents Park, Rochedale South, Shailer Park, Slacks Creek, Springwood, Tanah Merah, Underwood, Waterford, Waterford West and Woodridge.

Note:

Many questions in the survey allowed each respondent to choose more than one selection. Percentages are calculated as a proportion of the total number of selections to the number of respondents. Thus percentages may add to more than 100% in these cases.

