

## 05 Assessment of Logan Road Typologies

The Strategy provides a vision for the development of the landscaping in road reserves across the City of Logan. It is the intention of this Strategy to develop a design palette for the road reserve that is economically sustainable into the future through the use of low maintenance landscapes. It builds on the high quality landscape designs currently developed across the City of Logan by Logan City Council and the development industry.

The method used in establishing the landscape design palette commenced with an assessment of the Logan City Council Cross Sections, these cross sections are divided into their land use areas, including; urban residential, urban centres, industrial and non-urban. For consistency these land use categories have been used in the Strategy's "Character Precinct".

Within the land use categories there are a number of road types of various sizes as identified in the Logan City Council Cross Sections:

- \_urban residential - 14 road types plus 4 arterials,
- \_urban centres - 5 road types
- \_industrial - 7 types and
- \_non-urban 7 types)

From a landscape perspective these road types have similarities, namely where the cross sections prescribe a centre median or not. Verge width vary across the road types but generally street trees are to be located to the back of kerb. Road types are consolidated from a landscape design perspective where the desired landscaping outcomes can be achieved.

As is shown in the following pages the consolidation of the Logan City

Council Cross Sections provide a typology example along with those roads that could be landscaped in a similar manner.

The consolidation has resulted in the following number of landscape typologies :

- \_urban residential -5 landscape types
- \_urban centres - 2 landscape types
- \_industrial - 2 landscape types
- \_non-urban - 2 landscape types

These 11 landscape typologies form the basis of the landscape design palette presented through the typologies on the following pages. They demonstrate the preferred and retrofit opportunities for the landscape design of the road reserves across the City of Logan. The retrofit and preferred sections show "design intent". Refer to relevant design standards for detailed design of road treatments.

Each character precinct section includes:

- \_Introduction of the type of precinct
- \_Existing situation analysis
- \_Issues, opportunities, strategies and examples
- \_Typical street sections showing a retrofit and preferred option

Tree planting standards in relation to frangibility are required to be followed as per any relevant National, State or Local standards.



01\_



02\_



03\_



04\_



05\_

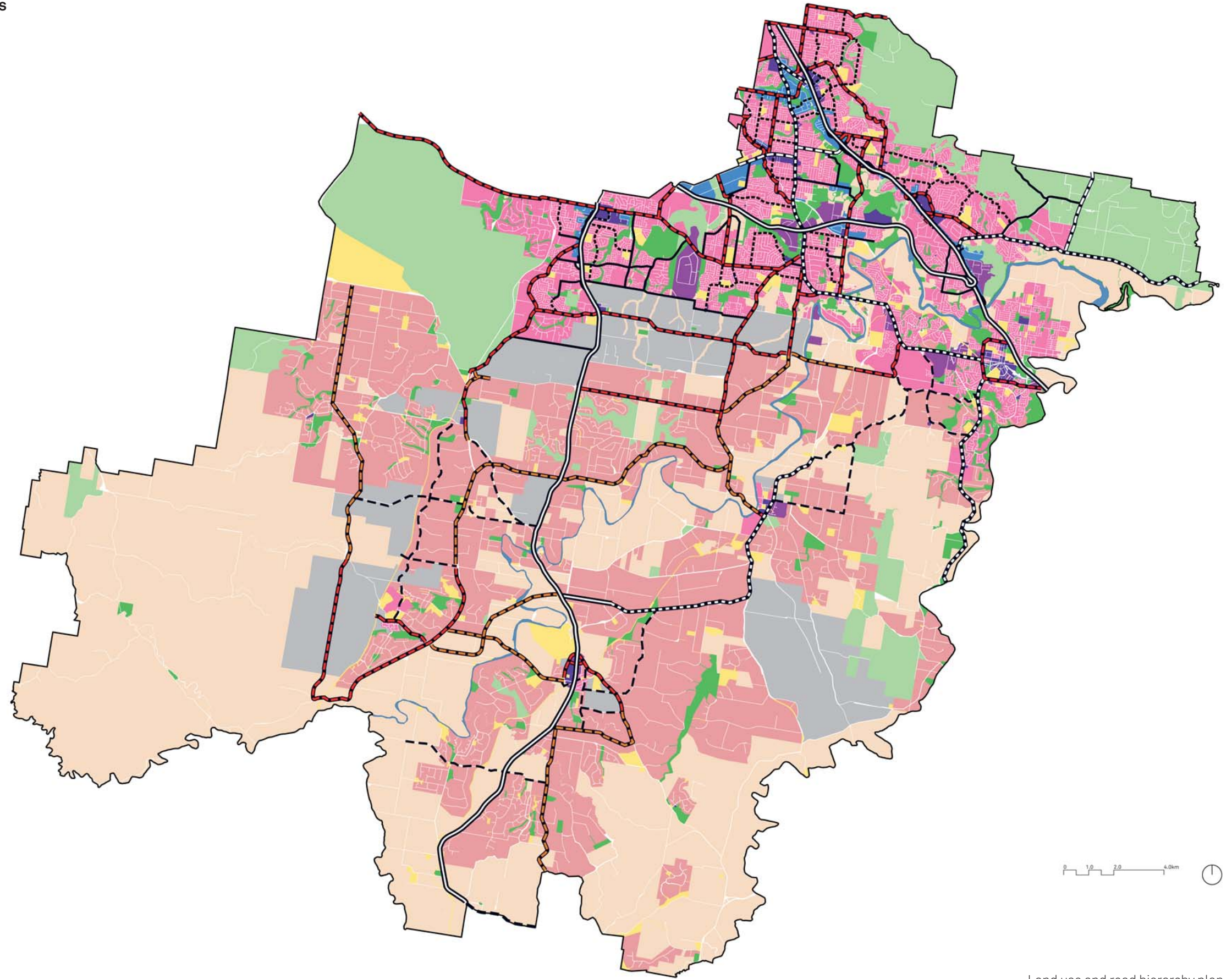


06\_

- 01\_ Street trees and pedestrian path along Wayne Goss Drive in Southwest1 Enterprise Park
- 02\_ Street trees on City Road, Beenleigh
- 03\_ Entry statement on Bryants Road, Loganholme
- 04\_ Existing vegetation retain on Springwood Road Springwood
- 05\_ Native vegetation, flush kerbs and grassed swale in median on Springwood Road
- 06\_ Existing vegetation maintained - Woodlands, Logan

**05 Assessment of Logan Road Typologies**

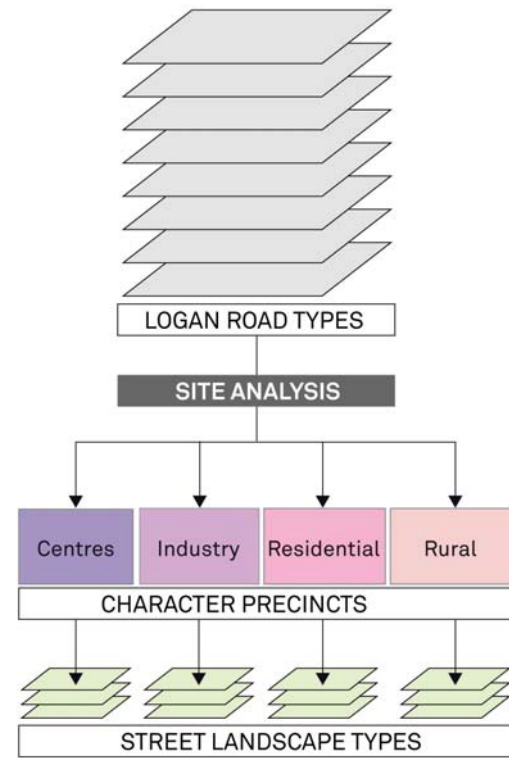
- Legend**
- \_Centres
  - \_Mixed Use
  - \_Industry
  - \_Residential
  - \_Community Purposes
  - \_Sport, Recreation and Open Space
  - \_Rural Residential
  - \_Rural
  - \_Environmental Conservation and Management
  - \_Emerging Communities
- STATE ROADS (Not part of this study)
- \_Highway
  - \_Main road
  - \_Urban arterial
- LOCAL ROADS
- \_Urban arterial
  - \_Rural arterial road
  - \_Major urban collector (limited access)
  - \_Major urban collector (access permitted)
  - \_Rural collector road



Land use and road hierarchy plan

Source:  
Logan City Council

05 Assessment of Logan Road Typologies



Logan Road Types		Street Landscape Typologies			
		Non-Urban	Residential	Industrial	Centres
<b>Urban</b>					
Arterial	1. Urban Arterial Road - Single Carriageway (cycle, breakdown in cycle)		3_pg 24		
	2. Urban Arterial Road - Four Lane Dual Carriageway (cycle, breakdown in cycle)		1_pg 22		
	3. Urban Arterial Road Multi-Modal Single Carriageway		3_pg 24		
	4. Urban Arterial Road Multi-Modal Four Lane Dual Carriageway		1_pg 22		
Collector	1. Urban Collector Frontage Road (parking, cycle, bus)		3_pg 24		
	2. Urban Collector Road (parking, cycle, bus)		3_pg 24		
	3. Urban Collector Road (cycle, bus, breakdown in cycle)		3_pg 24		
	4. Urban Collector Road - Two Lane Dual Carriageway (parking, cycle, bus)		2_pg 23		
	5. Urban Collector Road - Four Lane Dual Carriageway (parking, cycle, bus)		2_pg 23		
	6. Urban Collector Road - Multi-Modal - Single Carriageway		3_pg 24		
	7. Urban Collector Road - Multi-Modal - Four Lane Dual Carriageway		2_pg 23		
Access	1. Urban Access Street - Residential - Laneway		5_pg 26		
	2. Urban Access Street - Residential		4_pg 25		
	3. Urban Access Street - Park Living		4_pg 25		
	4. Urban Access Road - Residential		5_pg 26		
	5. Urban Frontage - Access Road - Residential		4_pg 25		
Transit	1. Urban Transit Road Single Carriageway		3_pg 24		
<b>Urban Centres</b>					
	1. Urban Collector Road - Centre - Multi-Modal - Retail / Commercial - Single Carriageway				2_pg 34
	2. Urban Collector Road - Centre - Retail/Commercial - Four Lane Dual Carriageway (parking, cycle, bus)				1_pg 33
	3. Urban Collector Road - Centre - Retail/Commercial (parking, cycle, bus)				2_pg 33
	4. Urban Access Main Street - Centre - Retail/Commercial - (two lane dual carriageway, angle parking, cycle, bus)				1_pg 33
	5. Urban Access Street - Centre - Retail/Commercial - Laneway				N/A

05 Assessment of Logan Road Typologies

Logan Road Types		Non-Urban Residential	Industrial	Centres
<b>Industrial</b>				
Collector	1. Industrial Collector Road - Single Carriageway (parking)		2_pg 30	
	2. Industrial Collector Road - Two Lane Dual Carriageway (parking)		1_pg 29	
	3. Industrial Collector Road - Two Lane Dual Carriageway (parking, cycle, bus)		1_pg 29	
	4. Industrial Collector Road - Multi-Modal - Single Carriageway		2_pg 30	
Access	1. Industrial Access Road		2_pg 30	
<b>Non-Urban</b>				
Arterial	1. Non-Urban Arterial Road - Single Carriageway (cycle, breakdown in cycle)	2_pg 18		
	2. Non-Urban Arterial Road - Four Lane Dual Carriageway (cycle, breakdown in cycle)	1_pg 17		
	3. Non-Urban Arterial Road - Multi-Modal - Single Carriageway	2_pg 18		
	4. Non-Urban Arterial Road - Multi-Modal - Four Dual Carriageway	1_pg 17		
Collector	1. Non-Urban Collector Road - Single Carriageway (cycle, breakdown in cycle)	2_pg 18		
	2. Non-Urban Collector Frontage Road - Single Carriageway (cycle, breakdown in cycle)	2_pg 18		
Access	1. Non-Urban Access Road	2_pg 18		

**Notes**

- 1 Illustrated typical section for specific road types - Refer Chapter 06
- Other road types not illustrated are referenced to typical sections in Chapter 06
- PDM Refer to Public Domain Manual for treatment