

# 2024

## World Environment Day Calendar Competition

Information Pack



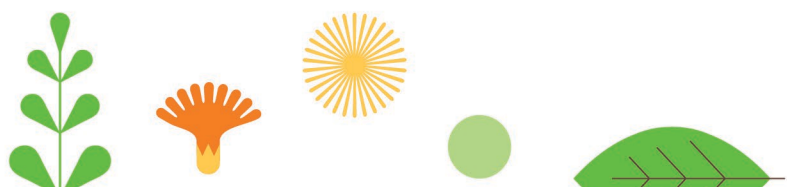
Sustainable Future



CITY OF  
**LOGAN**

## Acknowledgement of Country

We acknowledge the Traditional Custodians of this Country and recognise their continued connection to land, water and community. We pay our respect to Elders past and present and extend that respect to all Aboriginal and Torres Strait Islander peoples in the City of Logan.



Each year, we celebrate World Environment Day on 5 June by holding a calendar competition. The competition is open to all primary schools within the City of Logan where students are asked to showcase their visions of our natural environment through art. We reflect on the opportunity this has given for young people to provide input and raise awareness on the environmental topics that matter to them.

This year, students are asked to create a poster fitting the theme of 'Sustainable Future'.

## Theme overview

Logan contains an amazing range of natural areas that are highly valued by our community and form an integral and important part of the identity, cultural history and fabric of our city.

At Council we take pride in our green city, and we understand that the more our community connects with nature, the more we will understand, respect and care for nature. We provide opportunities through our environmental programs for our community to grow their connection with our land and waterways in all different aspects of their lives.

This year's theme encourages students to highlight the importance of eco-friendly choices in our daily lives, such as reducing waste, conserving energy, protecting our natural resources, and consider how this contributes to our sustainable future to create a healthier and greener city for all.

## Poster competition

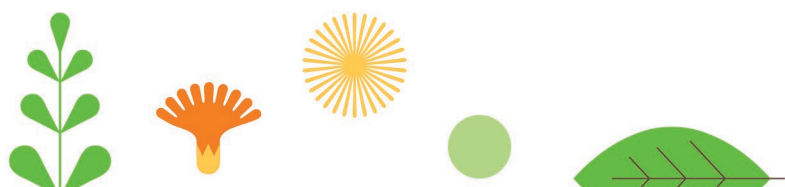
The World Environment Day Calendar Competition is open to all primary school students from Prep to Year 6 attending a school within the City of Logan. The competition provides a great opportunity for students to put their artistic creativity to the test by producing a colourful A4 or A3 poster.

## Entry conditions

- Submitted artwork must align with the 2024 World Environment Day theme: Sustainable Future.
- Students can only submit one individual entry. Group entries will not be eligible.
- Entries must either be A4 or A3 size in landscape orientation.
- Entries can be done in any format, from paper to digital artworks (i.e., drawing, painting, mixed media, digital graphics), and can include text. Laminated posters, videos and three-dimensional sculptures will not be eligible.
- Entries can be made from any traditional media, including pastel, oil pastels, pen, pencil, charcoal, acrylics, watercolour, oils, mixed media, collage, or any other sustainable environmentally friendly materials.
- Entries must be the student's original creation. Making a copy of any pre-existing image is not eligible, whether visually or by tracing. Colouring in a printed outline, picture drawn by someone else or having someone else contribute to the artwork is also not eligible.
- Entries must include an attached Student Entry Form on the back of each poster with a short description of the artwork.

## Key dates

- Entry submissions open: Tuesday 23 January 2024
- **Entry submissions close: Thursday 28 March 2024**
- Winners will be announced at the Logan Eco Action Festival (LEAF) on Sunday 2 June 2024



# Entry submissions

- Entries must be submitted through the student's school.
- Each school will need to collect and register all entries by year level. The five (5) best entries per year level will need to be selected and submitted to Council with the School Entry Form.
- Ensure each entry submitted to council includes the Student Entry Form with the school, teacher's and the student's name, and year level clearly visible.
- Entries can be submitted by post, digitally or hand delivered.

## Postal entries

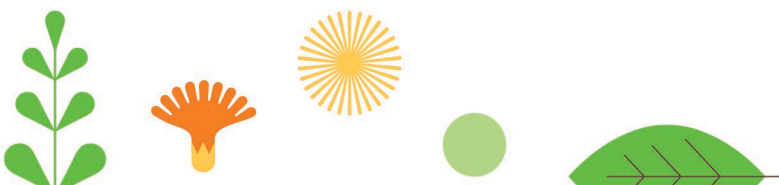
- Please print the School Entry Form and include it with the entries when they are posted.
- Please appropriately package the entries in the envelope to ensure they are not damaged in the post. Entries must be mailed to:
  - Attention: Health, Climate and Conservation Branch
  - Logan City Council
  - PO Box 3226, Logan City DC QLD 4114

## Hand delivered entries

- Please print the School Entry Form and include it with the entries when they are delivered.
- Please ensure that entries are put in an envelope with 'Attention: Health, Climate and Conservation Branch' on the front. Entries can be taken to:
  - Logan City Council Administration Centre
  - 150 Wembley Road, Logan Central

## Digital Entries

- Entries should be in .JPG or .PNG formats with a minimum file size of 300dpi.
- Ensure each entry is saved with the school and students name, and year level as the file name.
- Entries will need to include the front and back of the poster with the Student Entry Form visible on the back.
- Please upload all school entries to a cloud-based storage service (e.g., Google Drive, Dropbox, Microsoft OneDrive, etc) and include the link in the email.
- Please ensure the email includes 'WED competition entries' in the subject, the School Entry Form and the link to access the entries. Entries must be emailed to:  
[environment@logan.qld.gov.au](mailto:environment@logan.qld.gov.au)



# Categories & prizes

## Prizes for students

Prizes in the competition will be awarded in the following categories:

- Mayor's Choice Award
- Mayor's Choice Runner-up Award
- Eleven (11) Calendar Winner Awards
- Six (6) Highly Commended Awards

All finalists will feature in the City of Logan's 2025 World Environment Day calendar and receive a prize.

Every student who enters will receive a participation gift. Schools will need to provide the total number of entries for each year level to ensure we can provide prizes to all participants.

## Prizes for your school

All participating schools go in a random draw to win a major school prize.

## Judging

Entries will be judged by a panel of Logan City Council staff after the submissions have closed. Posters will be judged against this year's theme and the judging criteria outlined in the Terms and Conditions.

## Awards presentation

All finalists will be publicly announced at the 2024 Logan Eco Action Festival (LEAF) during the awards ceremony. Students will be presented with their certificate and prize by a representative of Council.

The major school prize winner will have a presentation at their school and will be attended by a representative of Council.

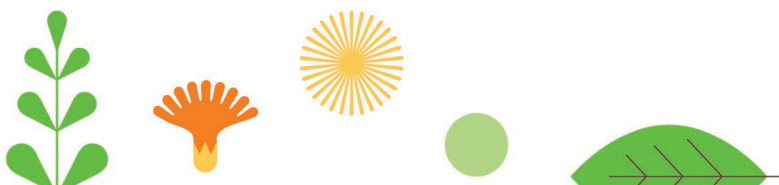
## Display & publication of posters

All finalists will be publicly announced at the 2024 Logan Eco Action Festival (LEAF) and will have their posters on display at the event. The displays will then be featured at the Logan Art Gallery. Further details will be provided closer to the event.

All finalists will feature in the City of Logan's 2025 World Environment Day calendar. Calendars will be available free of charge from Council in late 2024.



Full Terms and Conditions can be viewed on the World Environment Day Competition page ([www.logan.qld.gov.au/worldenvironmentday](http://www.logan.qld.gov.au/worldenvironmentday)) or scan the QR code to the left.



## Classroom activities

Here are some topics and activities that can be brought into the classroom to explore and better understand this year's theme.

### Go on a Nature Scavenger Hunt

A nature scavenger hunt is a great way to get students thinking about the environment and seeing the value of nature. Go on a scavenger hunt to find local native resources as a class or with your family. Spend time with nature and develop an understanding of the environment. As a group, share and discuss why a sustainable future is important for preserving our natural resources.

### Conduct an energy audit

Understanding your school or household energy usage will help you to identify areas where you can improve your energy efficiency and reduce energy costs. Collect data about your schools energy use and develop an energy plan to reduce energy consumption.

### Visit our Browns Plains Waste & Recycling facility

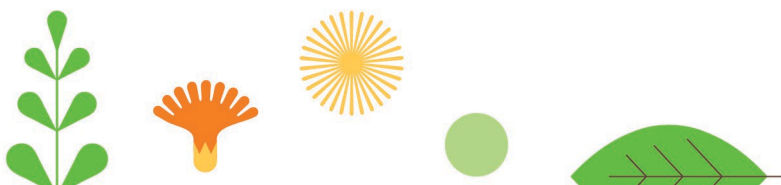
Did you know that Browns Plains waste and recycling facility has one of the biggest recycling markets in the Southern Hemisphere? If your family or school have any old furniture, white goods or even books that need disposing of, they can be dropped off at any of our waste and recycling facilities for the Logan Recycling Market.

### School clean up Australia Day

Participate in a School Clean up Australia Day on 1 March 2024 and help reduce and recycle waste. Create a waste audit of your school's waste. Assess the waste content in bins, classrooms and schoolyards. Review your school's waste collection practices and look into your school's waste and recycling costs.

### Book a waste education experience with Cleanaway

Cleanaway offers face-to-face and online waste education sessions for preschool, primary school, secondary school, university and TAFEs in select locations around Australia. All programs are carefully curated to strengthen knowledge and practice of local council waste management guidelines, support state education syllabus and engage students in sustainable waste management practices whilst fostering a sense of environmental stewardship.



## Curriculum mapping

We have compiled a guide that maps the Australian Curriculum against this year's theme to show how it can align with student learning outcomes. This competition provides an additional tool to further develop knowledge of key learning areas and enhance the development of general capabilities.

The Australian Curriculum Mapping Guide can be downloaded from the World Environment Day Competition page on our website ([www.logan.qld.gov.au/worldenvironmentday](http://www.logan.qld.gov.au/worldenvironmentday)).

## Further resources

City of Logan Natural Environment Strategy  
[logan.qld.gov.au/natural-environment-strategy](http://logan.qld.gov.au/natural-environment-strategy)

City of Logan Sustainable Living  
[logan.qld.gov.au/sustainableliving](http://logan.qld.gov.au/sustainableliving)

City of Logan Parks Directory  
[logan.qld.gov.au/parks/directory](http://logan.qld.gov.au/parks/directory)

Recycle at school  
[logan.qld.gov.au/recycling-school](http://logan.qld.gov.au/recycling-school)

City of Logan school water education  
[logan.qld.gov.au/water-and-sewerage/school-water-education-resources](http://logan.qld.gov.au/water-and-sewerage/school-water-education-resources)

Cool Australia  
[www.coolaustralia.org](http://www.coolaustralia.org)

Sustainable Schools  
[www.education.qld.gov.au/initiatives-and-strategies/strategies-and-programs/sustainable-schools](http://www.education.qld.gov.au/initiatives-and-strategies/strategies-and-programs/sustainable-schools)

Climate Change  
[www.qld.gov.au/environment/climate/climate-change](http://www.qld.gov.au/environment/climate/climate-change)

Sustainable lifestyles  
[www.unep.org/explore-topics/resource-efficiency/what-we-do/sustainable-lifestyles](http://www.unep.org/explore-topics/resource-efficiency/what-we-do/sustainable-lifestyles)

Junior Landcare  
[www.juniorlandcare.org.au/science-environment-learning-activities](http://www.juniorlandcare.org.au/science-environment-learning-activities)

Cleanaway  
[www.cleanaway.com.au/about-us/community-education/waste-education-school-programs](http://www.cleanaway.com.au/about-us/community-education/waste-education-school-programs)

Clean Up Australia  
[www.cleanup.org.au/schools](http://www.cleanup.org.au/schools)

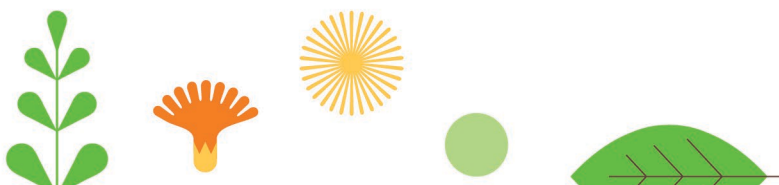
Water Wise  
[www.seqwater.com.au/water-wise](http://www.seqwater.com.au/water-wise)

## For more information

Phone: 3412 4491

Visit: [logan.qld.gov.au/worldenvironmentday](http://logan.qld.gov.au/worldenvironmentday)

Email: [environment@logan.qld.gov.au](mailto:environment@logan.qld.gov.au)



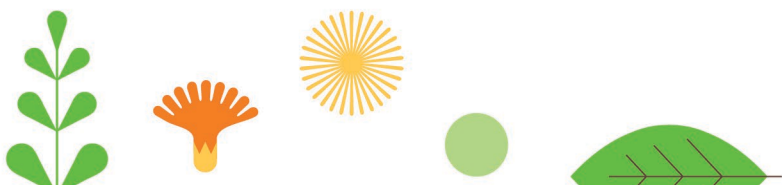


# World Environment Day 2024 - Competition School Entry Form

Please submit only the top five (5) entries from each year level.

School name:.....

Year level	Student names (top five (5) entries)	Total number of participating students	Contact teacher (name and email)
Prep	1.		
	2.		
	3.		
	4.		
	5.		
Year 1	1.		
	2.		
	3.		
	4.		
	5.		
Year 2	1.		
	2.		
	3.		
	4.		
	5.		
Year 3	1.		
	2.		
	3.		
	4.		
	5.		
Year 4	1.		
	2.		
	3.		
	4.		
	5.		
Year 5	1.		
	2.		
	3.		
	4.		
	5.		
Year 6	1.		
	2.		
	3.		
	4.		
	5.		
Total number of students who participated across the whole school:			





## Postal entries

- Please print the School Entry Form and include it with the entries when they are posted.
- Please appropriately package the entries in the envelope to ensure they are not damaged in the post. Entries must be mailed to:  
Attention: Health, Climate and Conservation  
Logan City Council  
PO Box 3226, Logan City DC QLD 4114

## Hand delivered entries

- Please print the School Entry Form and include it with the entries when they are delivered.
- Please ensure that entries are put in an envelope with 'Attention: Health, Climate and Conservation Branch' on the front. Entries can be taken to:  
Logan City Council Administration Centre  
150 Wembley Road, Logan Central

## Digital entries

- Entries should be in .JPG or .PNG formats with a minimum file size of 300dpi.
- Ensure each entry is saved with the school and students name, and year level as the file name.
- Entries will need to include the front and back of the poster with the Student Entry Form visible on the back.
- Please upload all school entries to a cloud-based storage service (e.g., Google Drive, Dropbox, Microsoft OneDrive, etc) and include the link in the email.
- Please ensure the email includes 'WED competition entries' in the subject, the School Entry Form and the link to access the entries. Entries must be emailed to: [environment@logan.qld.gov.au](mailto:environment@logan.qld.gov.au)

All participants receive a prize (even if the entry is not in the top 5), therefore, please supply Council with the total number of students from each year level who submitted an entry in the competition.

By submitting this form, you agree to the Terms and Conditions. Please refer to the Terms and Conditions on the World Environment Day Competition page on our website ([www.logan.qld.gov.au/world-environmentday-calendar-competition-terms-conditions](http://www.logan.qld.gov.au/world-environmentday-calendar-competition-terms-conditions)) for further information and guidelines.



## World Environment Day 2024 - Competition Student Entry Form

Please produce a landscape orientation poster either A4 or A3 in size which illustrates the theme **‘Sustainable Future’**. Please fill in and attach this entry form to the back of the poster.  
Closing date: **Thursday 28 March 2024** (entry forms must be legible to be considered).

**Student’s name:**

**Year level:**

**Teacher’s name:**

**School:**

**What is your poster about? (Please use no more than 20 words)**

## World Environment Day 2024 - Competition Student Entry Form

Please produce a landscape orientation poster either A4 or A3 in size which illustrates the theme **‘Sustainable Future’**. Please fill in and attach this entry form to the back of the poster.  
Closing date: **Thursday 28 March 2024** (entry forms must be legible to be considered).

**Student’s name:**

**Year level:**

**Teacher’s name:**

**School:**

**What is your poster about? (Please use no more than 20 words)**

## World Environment Day 2024 - Competition Student Entry Form

Please produce a landscape orientation poster either A4 or A3 in size which illustrates the theme **‘Sustainable Future’**. Please fill in and attach this entry form to the back of the poster.  
Closing date: **Thursday 28 March 2024** (entry forms must be legible to be considered).

**Student’s name:**

**Year level:**

**Teacher’s name:**

**School:**

**What is your poster about? (Please use no more than 20 words)**