

# Upcoming changes to shared paths February 2024

## Loganlea Road Major Upgrade

### SHARED PATH CHANGES FROM LATE FEBRUARY 2024 (site and weather pending)

- > **From late February 2024**, the northbound shared path from Ellerslie Road to Queens Road will temporarily close. See Figure 1 and 2 below, in red.
- > Path users can cross at Ellerslie Road and Queens Road intersections (Figure 1 and 2).
- > The new path will be open from Queens Road to Ray Hodgson Bridge. (Figure 2 and 3, in green).
- > All changes will be signed.

Figure 1

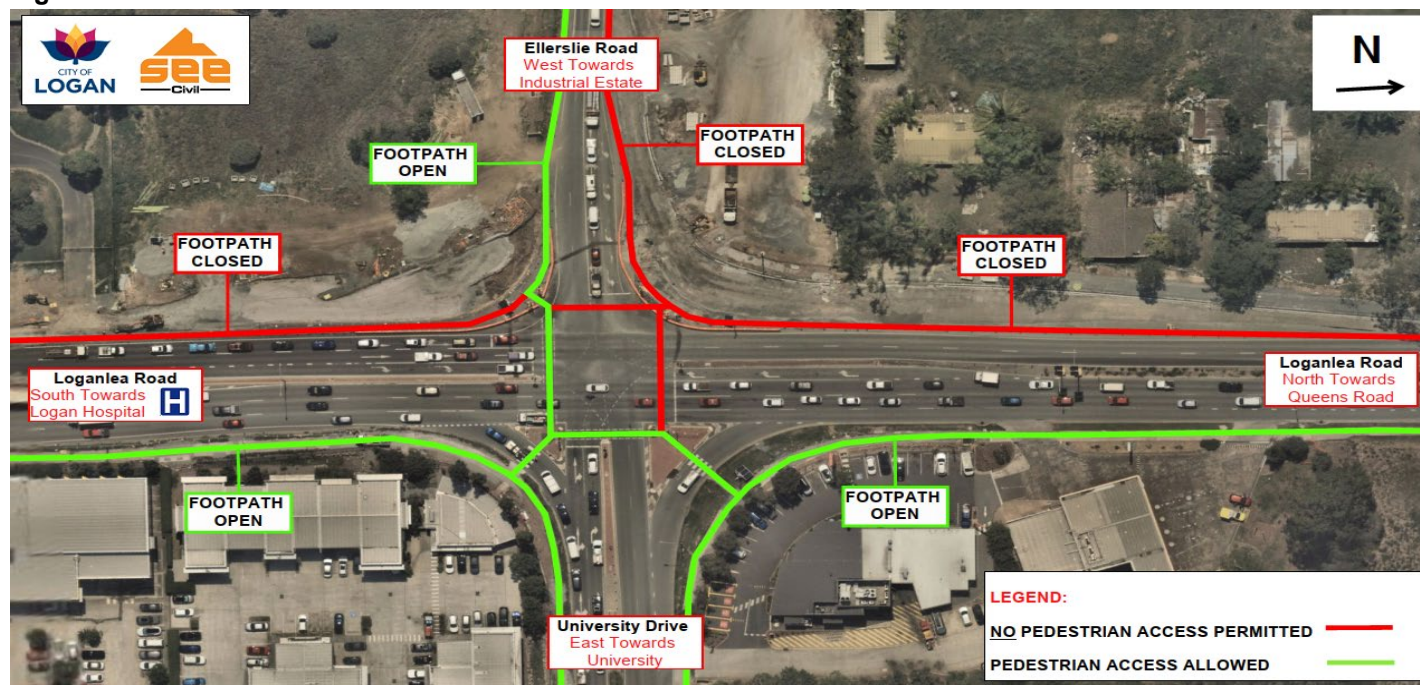


Figure 2

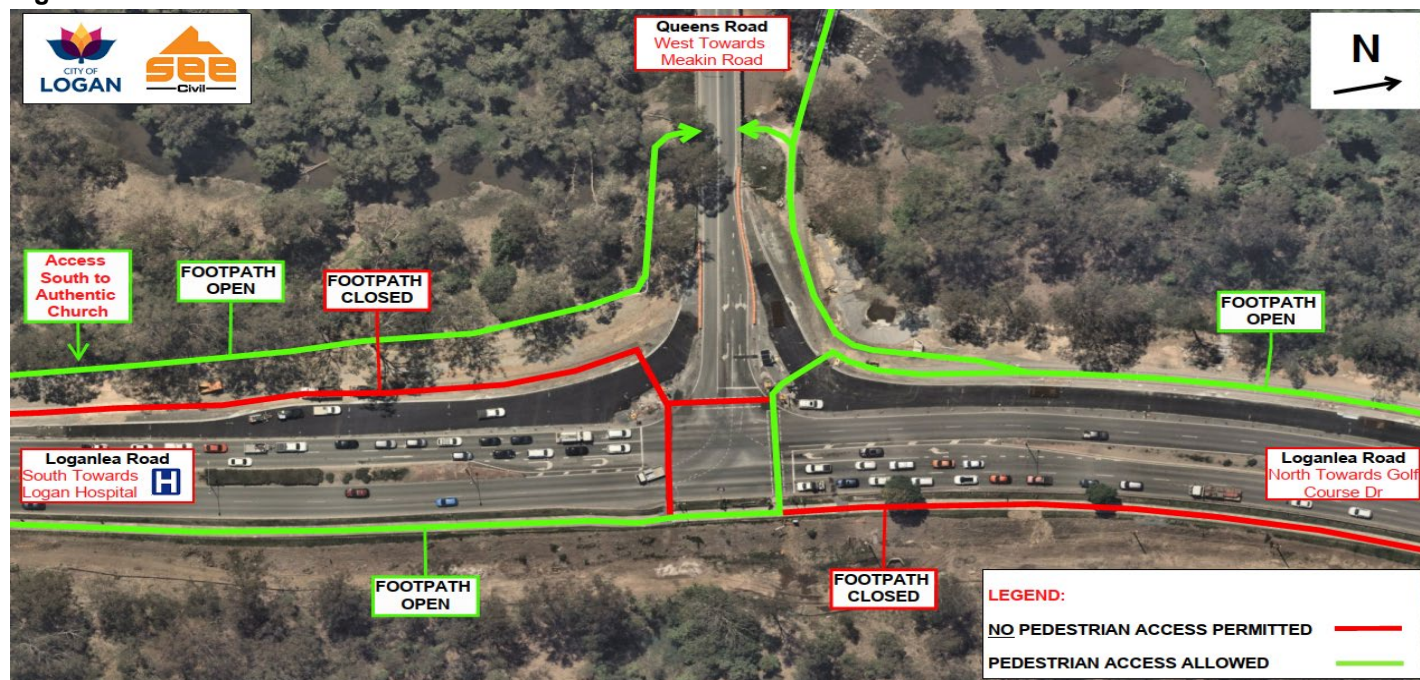
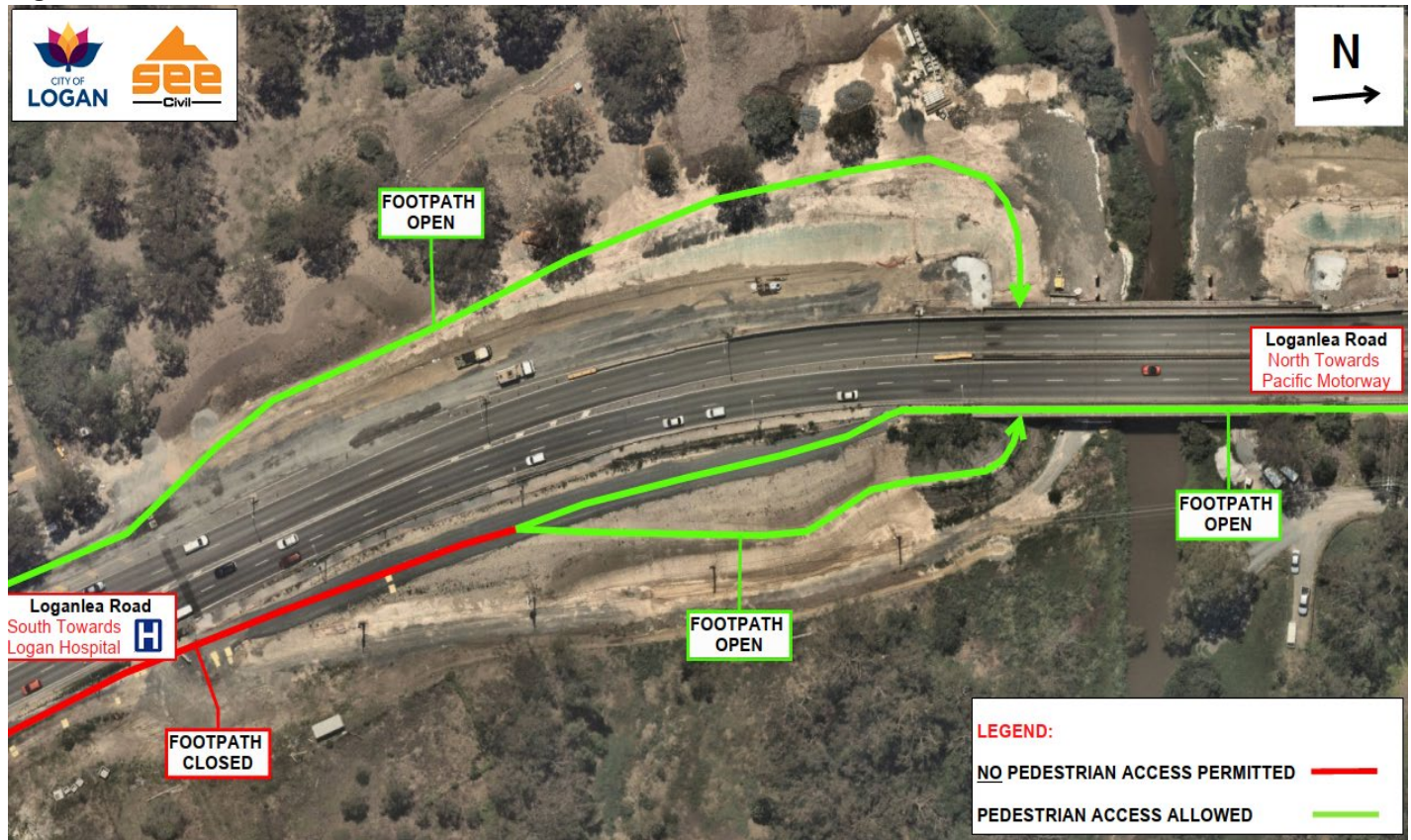


Figure 3



Please stay safe by following all instructions and remaining inside any flagged paths.

### WHAT'S NEXT

Path users can expect ongoing changes from mid-to-late March 2024. Look out for upcoming notifications in your mailbox in the coming weeks.

### CONTACT US

For more information about construction activities, contact the

**SEE Civil Community Relations Advisor:**

**Phone:** 0439 235 778

**Email:** [info@SEECivil.com.au](mailto:info@SEECivil.com.au)

**Register for updates:**

[roadcomms@logan.qld.gov.au](mailto:roadcomms@logan.qld.gov.au)

### MORE INFORMATION

Scan the QR code below to find out more about the upgrade project.

