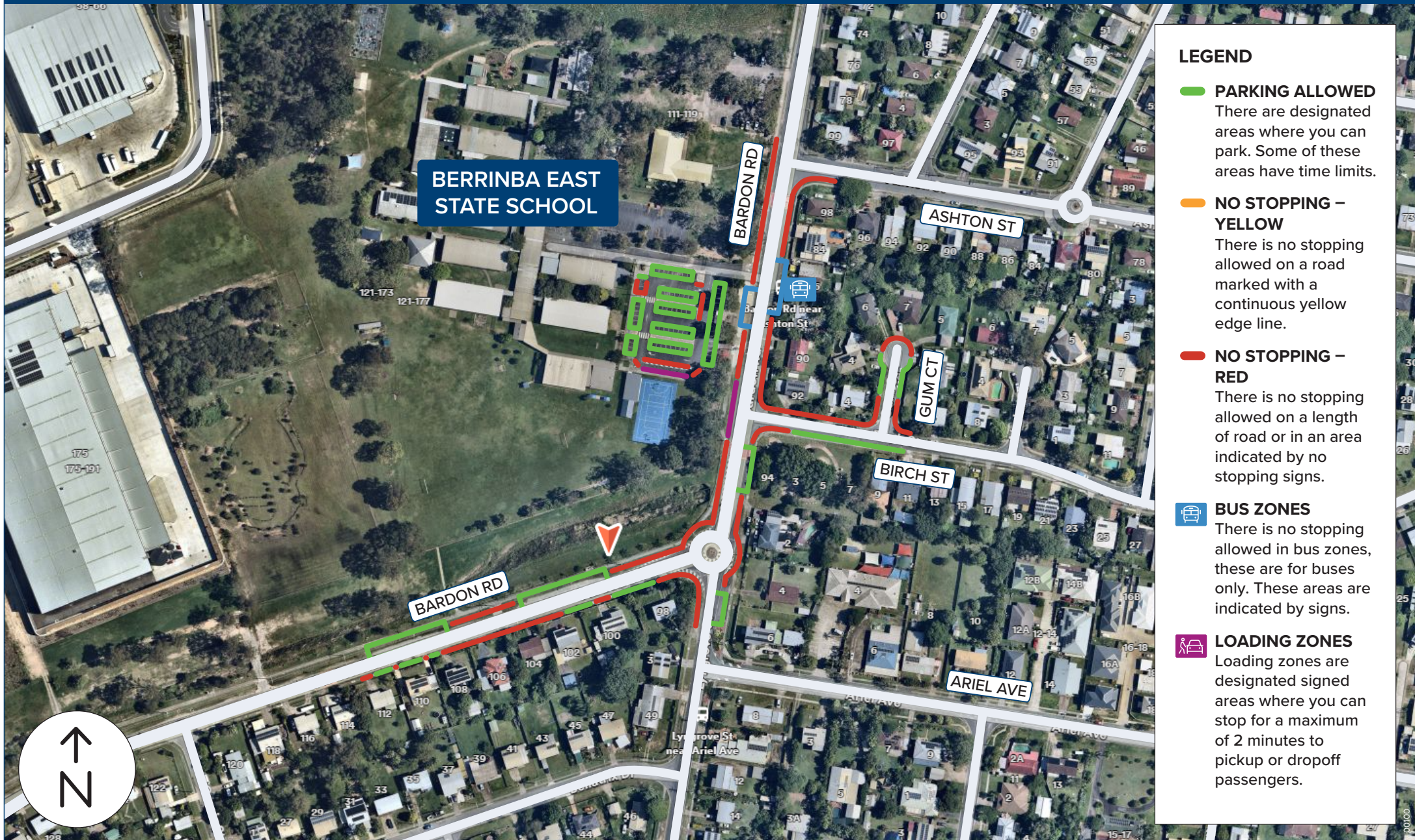


# School parking guide

**BERRINBA EAST STATE SCHOOL**  
165 Bardon Rd, Berrinba QLD 4117



## LEGEND

**PARKING ALLOWED**  
There are designated areas where you can park. Some of these areas have time limits.

**NO STOPPING - YELLOW**  
There is no stopping allowed on a road marked with a continuous yellow edge line.

**NO STOPPING - RED**  
There is no stopping allowed on a length of road or in an area indicated by no stopping signs.

**BUS ZONES**  
There is no stopping allowed in bus zones, these are for buses only. These areas are indicated by signs.

**LOADING ZONES**  
Loading zones are designated signed areas where you can stop for a maximum of 2 minutes to pickup or dropoff passengers.

Please note this map is intended as a guide only and is not to scale. It is important to observe and adhere to Queensland road rules while using this map.